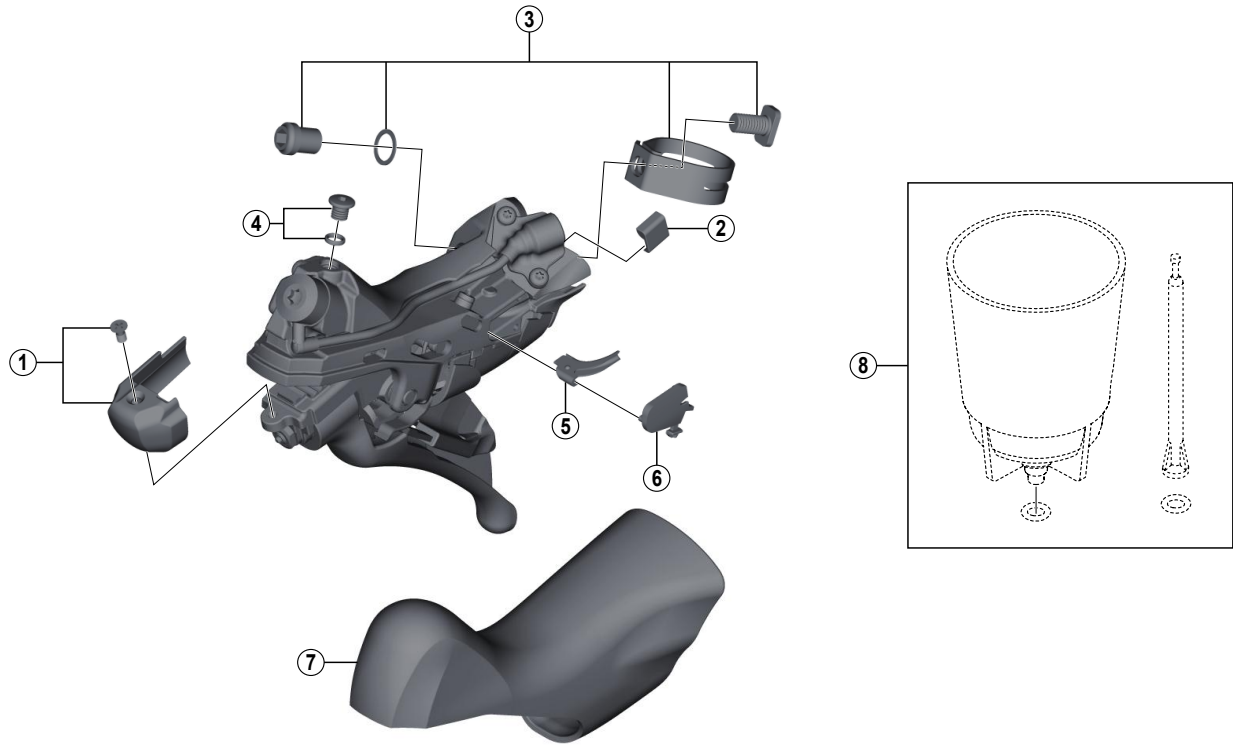


Dual Control Lever (For Disc Brake)

ST-RS685



ITEM NO.	SHIMANO CODE NO.	DESCRIPTION
1	Y07X98020	R.H. Name Plate R & Fixing Screws
	Y07V98020	L.H. Name Plate L & Fixing Screws
2	Y63X80000	R.H. Main Lever Support R
	Y63X80010	L.H. Main Lever Support L
3	Y07X98050	Clamp Band Unit (ø23.8 mm - ø24.2 mm)
4	Y8V398010	Bleed Screw & O-Ring
5	Y07X75000	SL Cable Guide R
	Y07V75000	SL Cable Guide L
6	Y07X76000	SL Cable Cover R
	Y07V76000	SL Cable Cover L
7	Y07X98080	Bracket Covers (Pair)
8	ESMDISCBP	Funnel & Oil Stopper

A: Same parts.

B: Parts are usable, but differ in materials, appearance, finish, size, etc.

Absence of mark indicates non-interchangeability.

Oct.-2014-3675

© Shimano Inc. H

Specifications are subject to change without notice.

SHIMANO